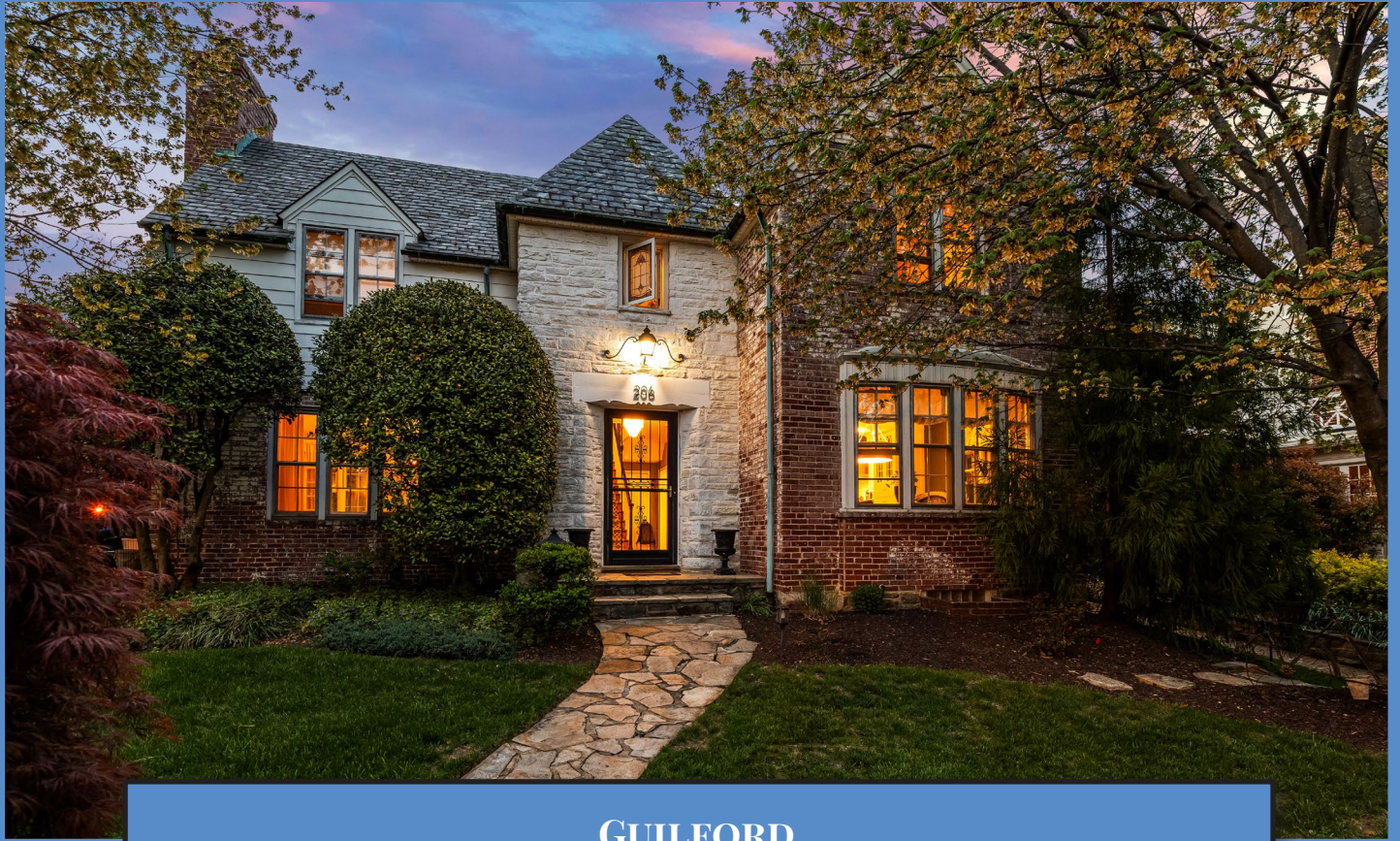


*Hubble
Bisbee*

CHRISTIE'S
INTERNATIONAL REAL ESTATE

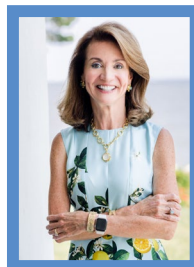


GUILFORD
206 KEMBLE ROAD



LOCATIONS

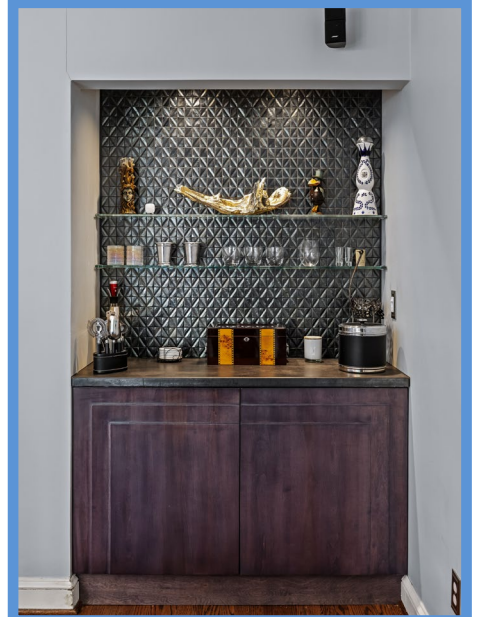
2330 W Joppa Road, Suite 104
Lutherville, MD 21093
181 Harry S Truman Pkwy Ste 200
Annapolis, MD 21401

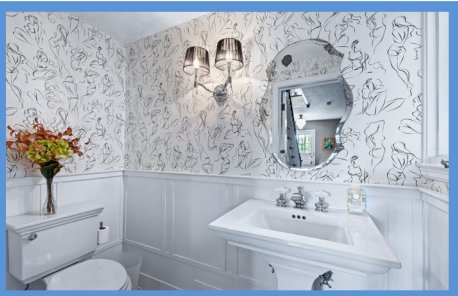


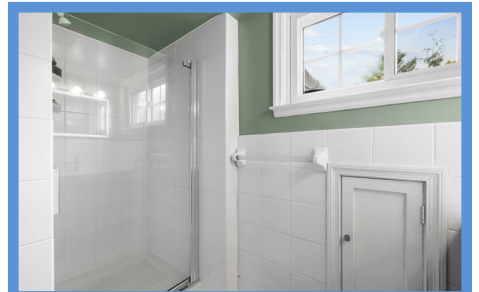
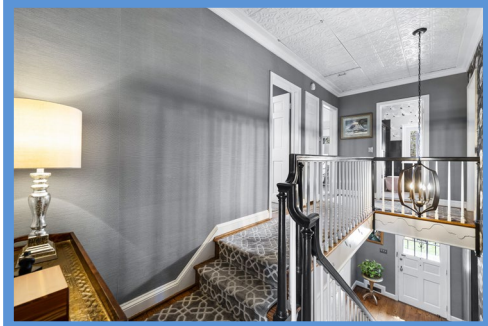
KAREN HUBBLE BISBEE

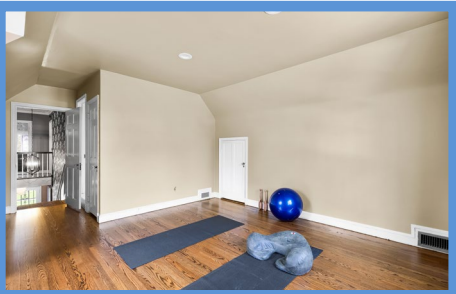
Principal, Associate Broker, ABR, GRI
Karen@HubbleBisbee.com
443-838-0438 (Mobile)
410-321-1411 (Office)

WWW.HUBBLEBISBEE.COM | (410) 321-1411 (OFFICE) | 









FOYER 20'4" X 8'10"

- Paneled entry door with 6-pane window
- Hardwood flooring
- Open oak staircase with hardwood handrails, painted spindles, wainscot and carpet runner
- Built-in closet units
- Milk-glass ceiling light
- Wainscot staircase wall with concealed access to Lower Level
- Access to Powder Room
- Two cased portals to Kitchen
- Cased portal to Living Room

LIVING ROOM 19'10" X 17'9"

- Hardwood flooring
- Woodburning fireplace with colonial mantel, slate surround and hearth
- Triple window, double window and additional window- all with drapery treatments
- Bar in alcove with bast cabinet, stone top, glass shelves on glass-tiled wall and recessed lighting
- Exit door to side porch with transom and 12-pane window
- Built-up crown molding
- Crystal orbit 6-light chandelier
- Two crystal triple wall sconce lights
- Sony wall mount TV excluded
- Surround sound excluded

KITCHEN 18'3" X 12'10"

- Hardwood flooring with marble inlaid flooring in work areas
- White recess-panel solid wood custom cabinetry including black island/breakfast bar, glass-door cabinets, 42" wall cabinets, roll-out trays, pantry cabinets, pot-pan drawers, appliance garage, TV cabinet, lazy-Susan base cabinet, island-end open shelving, tray cabinet, pull-out trash/recycle bins, dovetailed drawers. Soft-close cabinets/drawers and matching crown trim
- Granite counters with black solid surface breakfast bar top
- Subway glass tile backsplashes to ceiling with mosaic tile borders
- KitchenAid built-in French door refrigerator with matching front panels
- GE Monogram stainless steel gas range with griddle
- Tradewinds range hood with lighting and custom copper enclosure
- Bosch stainless steel dishwasher
- Kohler farmhouse sink with gooseneck faucet, basin rack and Insinkerator disposer
- Stainless steel undermount sink with gooseneck faucet
- Three pendant lights with glass shades above island and matching pendant light above sink
- Bay window at sink
- Exit door with 6-pane window
- Recessed lighting
- Under-cabinet lighting
- Built-in ceiling speakers

- Flows to large dining area (12'10" X 11'5") with metal drum chandelier, bay window and double window with custom Roman shades

POWDER ROOM

- Black and white ceramic tile floor
- Wainscot
- Kohler pedestal sink and matching toilet
- Beveled mirror
- Modern double wall sconce light with shades
- Stained glass window

UPPER LEVEL

HALL 17'5" X 7'2"

- Landing for staircase with wraparound banister overlook
- Hardwood flooring with installed carpet runner
- Painted tin ceiling
- Crown molding
- Modern 5-light pendant light
- Linen closet
- Pull-down attic stairs

PRIMARY BEDROOM 17'10" X 17'5"

- Wall-to-wall carpeting
- Double window and 2 additional window with pleated shades
- Walk-in custom fitted closet and additional closet
- Modern crystal ceiling light
- Access to Primary Bath

PRIMARY BATH 9'3" X 9'1"

- Renovated 2026
- Ceramic tile floor, wainscot and shower stall
- Modern vanity with solid surface top and seamless sink, illuminated back-lit mirror and overhead lighting with glass shades
- Shower stall with glass door
- Double window
- Medicine cabinet
- Ceiling fan Additional access from Bedroom 4

BEDROOM 2 14'2" X 12'10"

- Wall-to-wall carpeting
- Two double windows with pleated shades
- Two closets
- Modern crystal ceiling light

BEDROOM 3 12'10" X 11'2"

- Wall-to-wall carpeting
- Two double windows with Roman shades
- Closet
- Drum ceiling light

BEDROOM 4 14'0" X 12'3"

- Hardwood flooring
- Double window
- Additional window with Roman shade
- Closet
- Storage closet
- Wall niche with Insignia wall mount TV
- Built-in bookcase
- Recessed lighting
- Access to Primary Bath

HALL BATH 8'11" X 4'6"

- Ceramic tile floor, wainscot and tub surround
- Floating modern vanity with solid surface top and seamless sink, mirrored medicine cabinet and overhead lighting
- Tub/shower combination with sliding glass doors
- Kohler flush
- Window with stained glass insert
- Crown molding

LOWER LEVEL

FAMILY ROOM 28'1" X 20'3"

- Carpeted staircase access
- Painted stone walls
- Wood finish ceramic tile floor
- Sound-absorption ceiling in seating area
- Two glass block windows
- Interior glass block window
- Exit door with 6-pane window
- Electric service panel
- Recessed lighting
- Drum chandelier
- Three-light billiards lamp with shades
- Home audio system cabinet excluded
- Panasonic wall mount TV with surround sound excluded

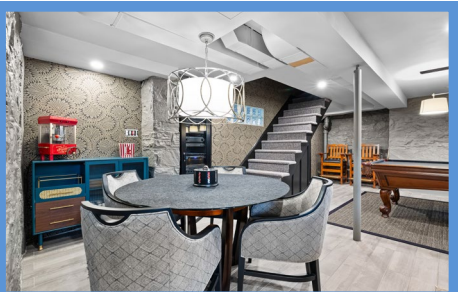
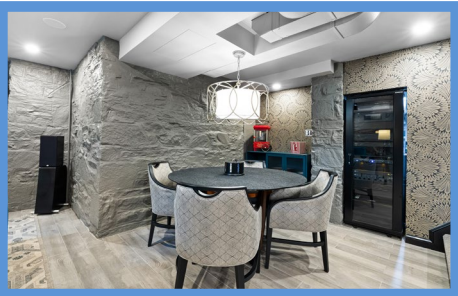
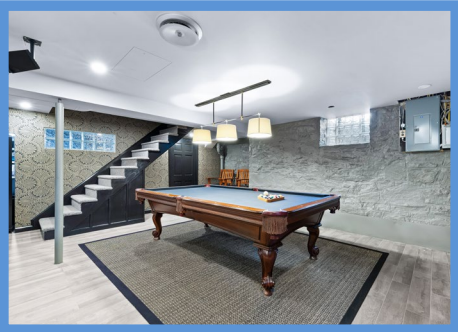
LAUNDRY/UTILITY ROOM 17'10" X 17'8"

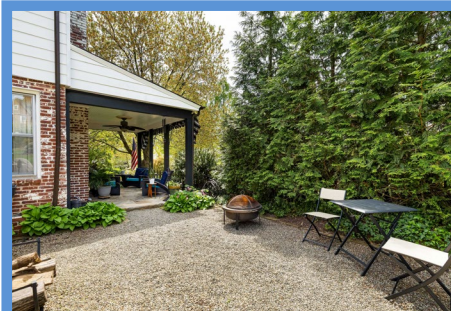
- Unfinished
- Glass block window
- Auto-light
- Carrier HVAC unit with gas heat and Aprilaire humidifier
- Bradford White gas-fired water heater
- Double utility sink
- LG washer and dryer

EXTERIOR

- Brick and siding with stone at main entry
- Slate roof
- Flagstone steps and front walkway to flagstone porch at main entry
- Covered flagstone side porch at Living Room with ceiling fan and flow to gravel gathering area with stone Koi pond and gravel 'bridge'
- Brick Patio
- Bluestone Patio
- Stacked stone garden walls and boulder steps
- Attached 2-car Garage with exterior keypad access
- Attached 1-car carport

All information herein is deemed reliable but not guaranteed by the Broker.





*Hubble
Bisbee*

CHRISTIE'S
INTERNATIONAL REAL ESTATE

GREEN SPRING
STATION
410-321-1411

ANNAPOLIS
410-321-1833

